



INSTALLAZIONE E CONFIGURAZIONE SYMANTEC WINFAX PRO 10 CLIENT

Accedere al pc con diritti di amministrazione

Inserire il cd etichettato "Winfax Pro 10"

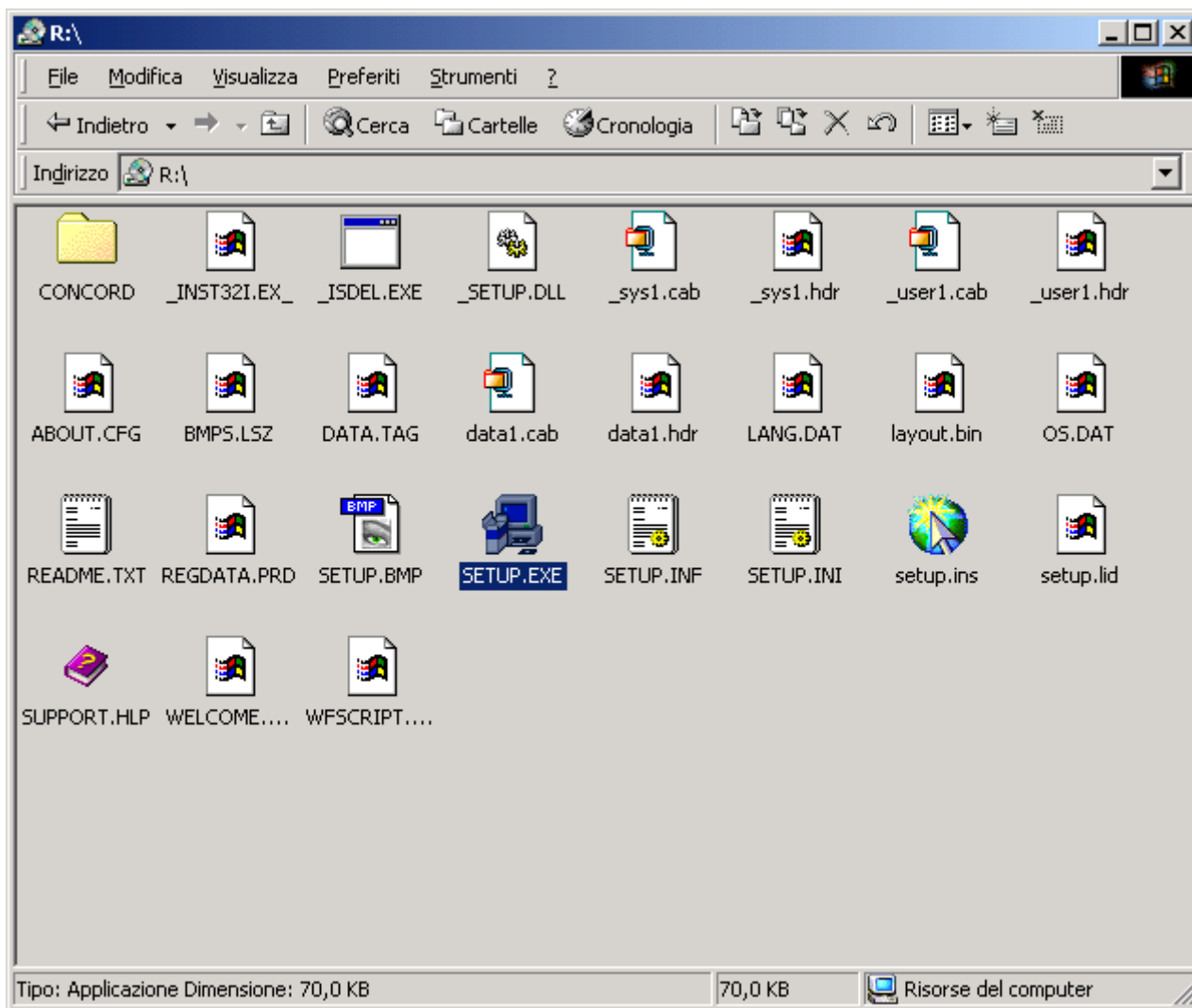


Fig.1

Doppio click su **Setup.exe**

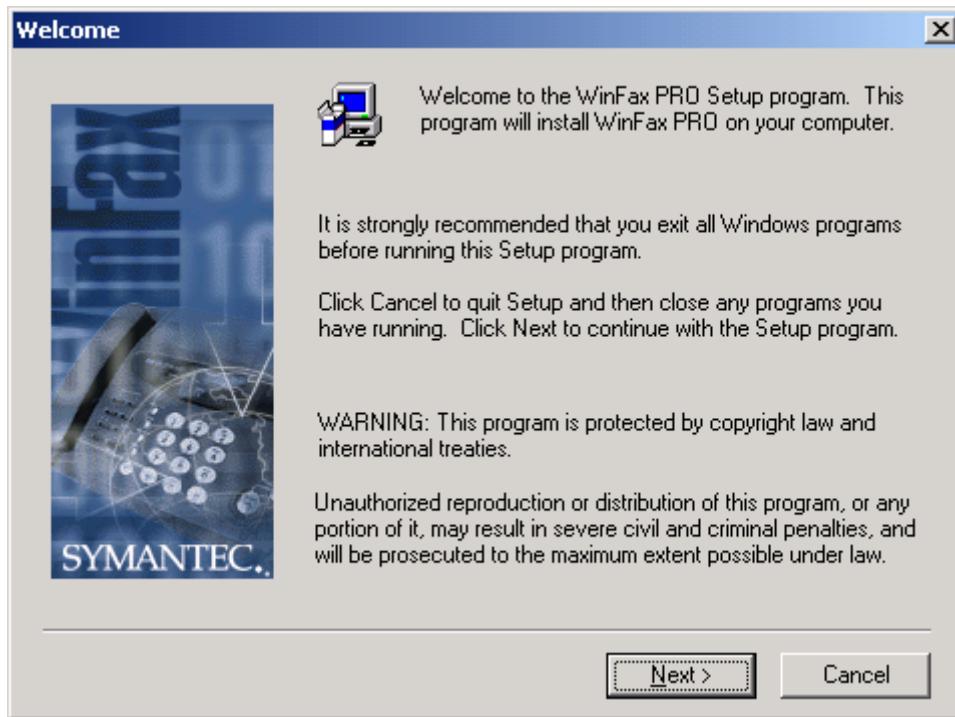


Fig.2

Cliccare su **Next**

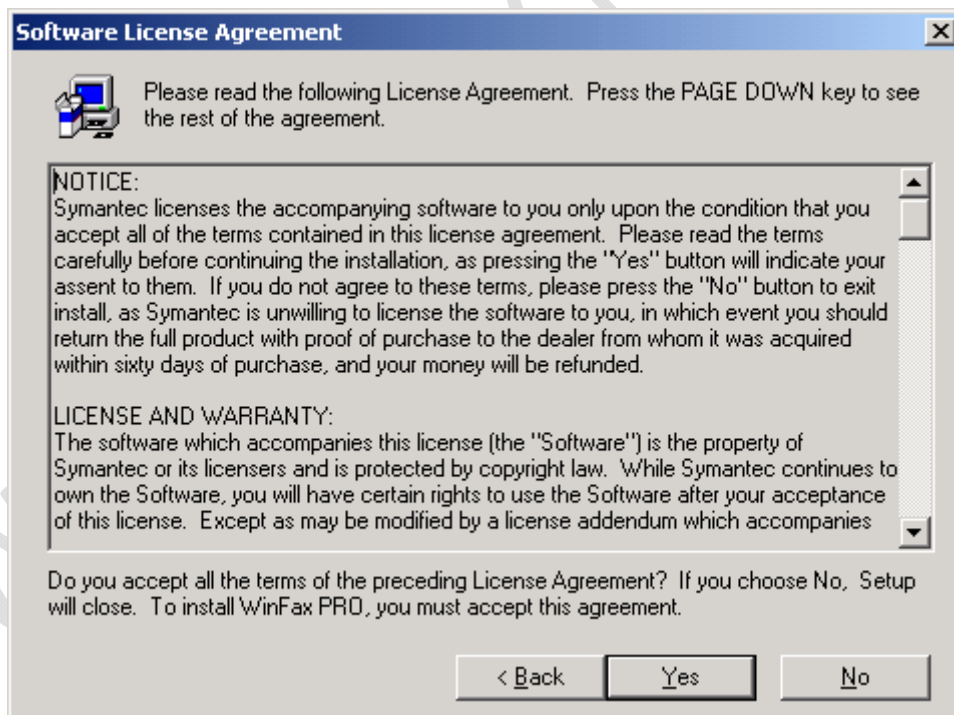


Fig.3

Cliccare su **Yes**

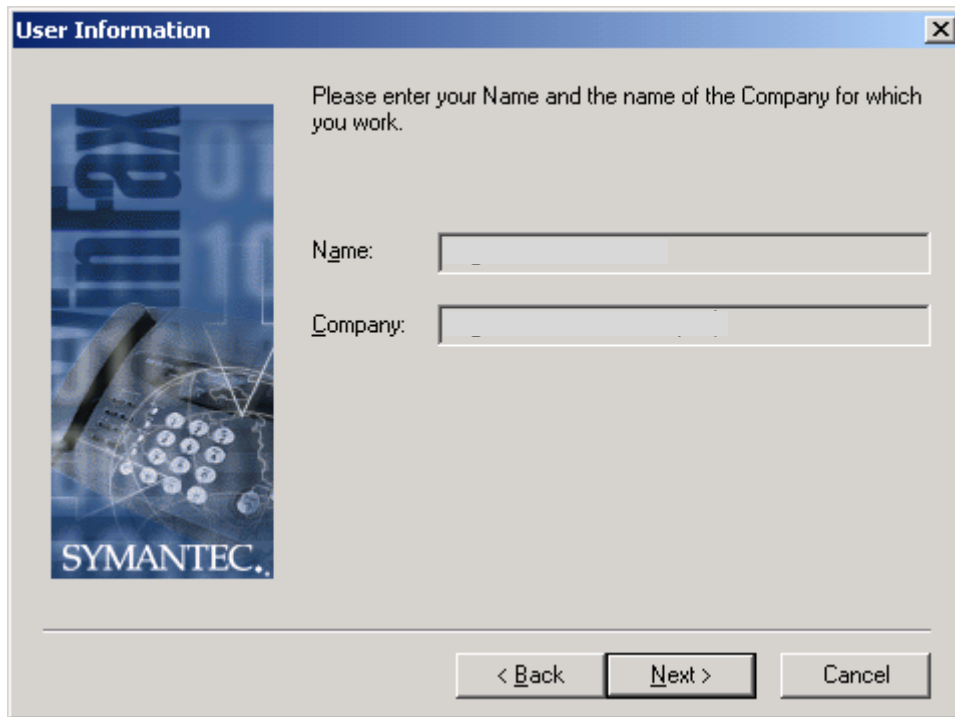


Fig.4

Completare i campi **Name** e **Company** con le seguenti informazioni

Name: xxxx

Company: xxxxx

Cliccare su **Next**

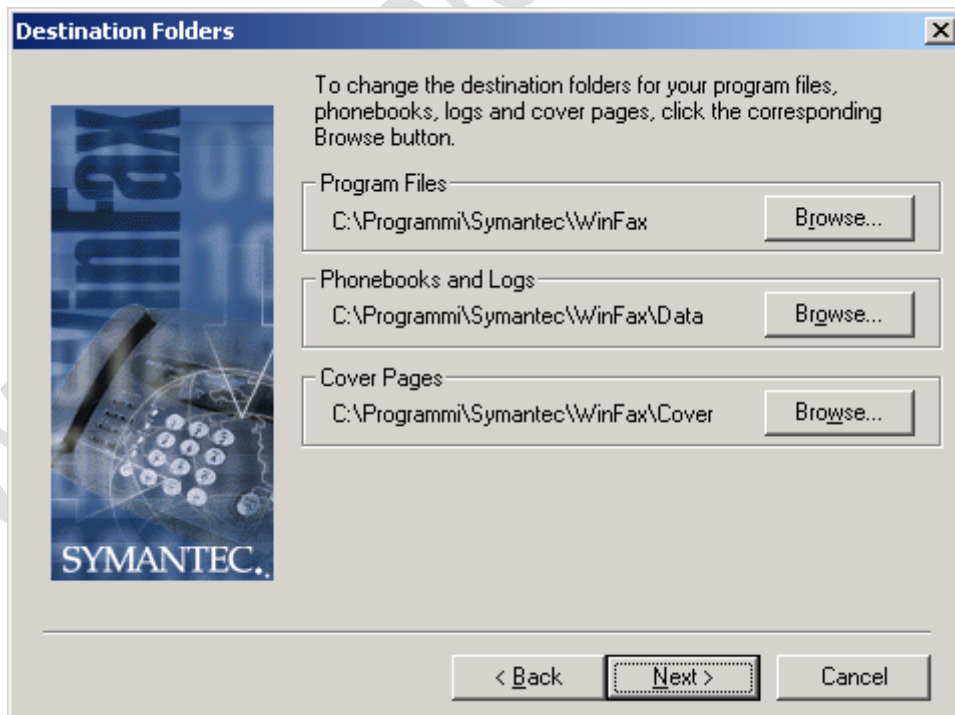


Fig.5

Cliccare su **Next**

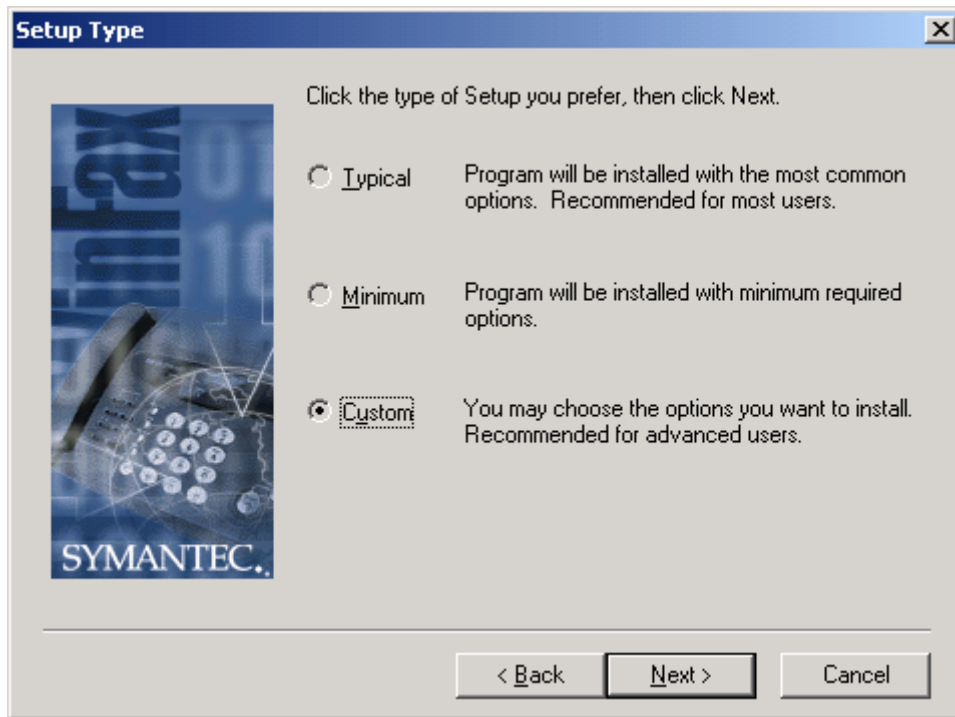


Fig.6

Selezionare **Custom**

Cliccare su **Next**

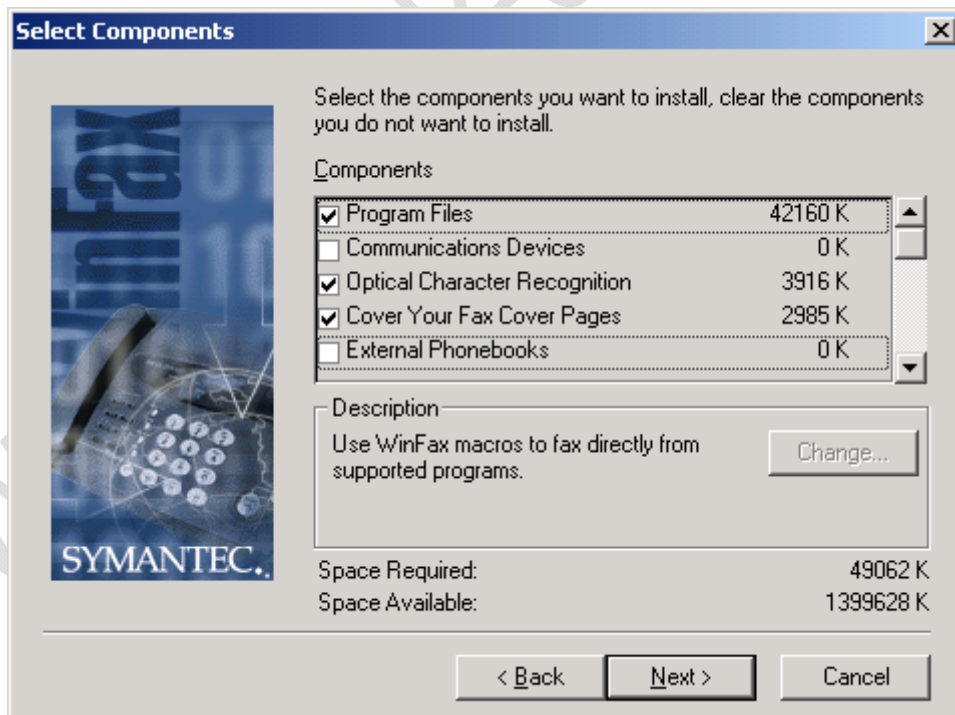


Fig.7

Selezionare **TUTTE** le voci

Cliccare su **Next**

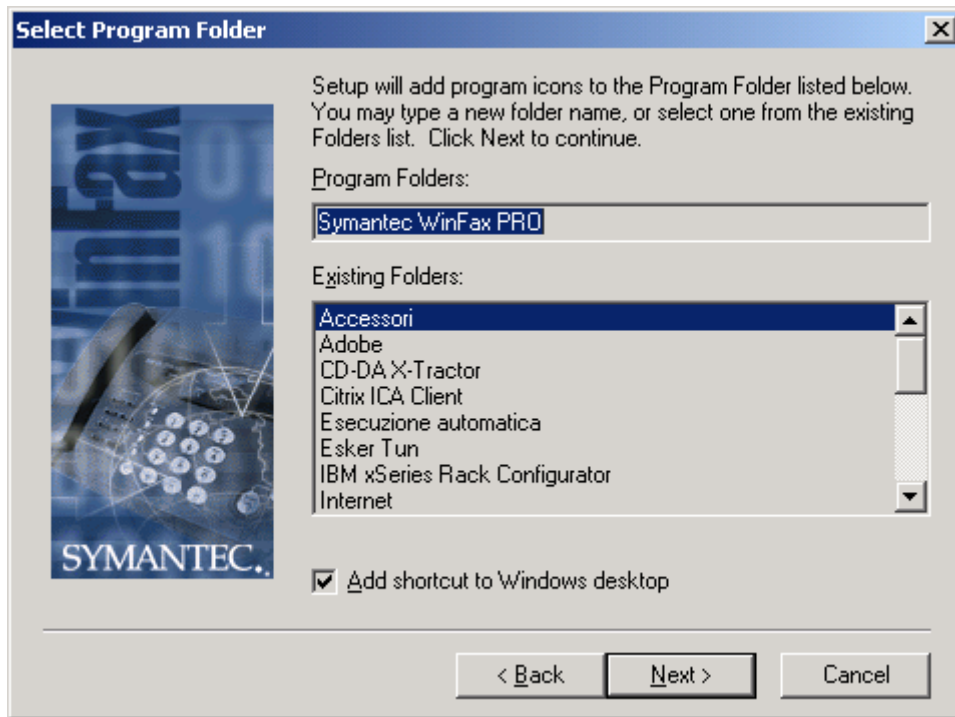


Fig.8

Cliccare su **Next**



Fig.9

Cliccare su **Next**

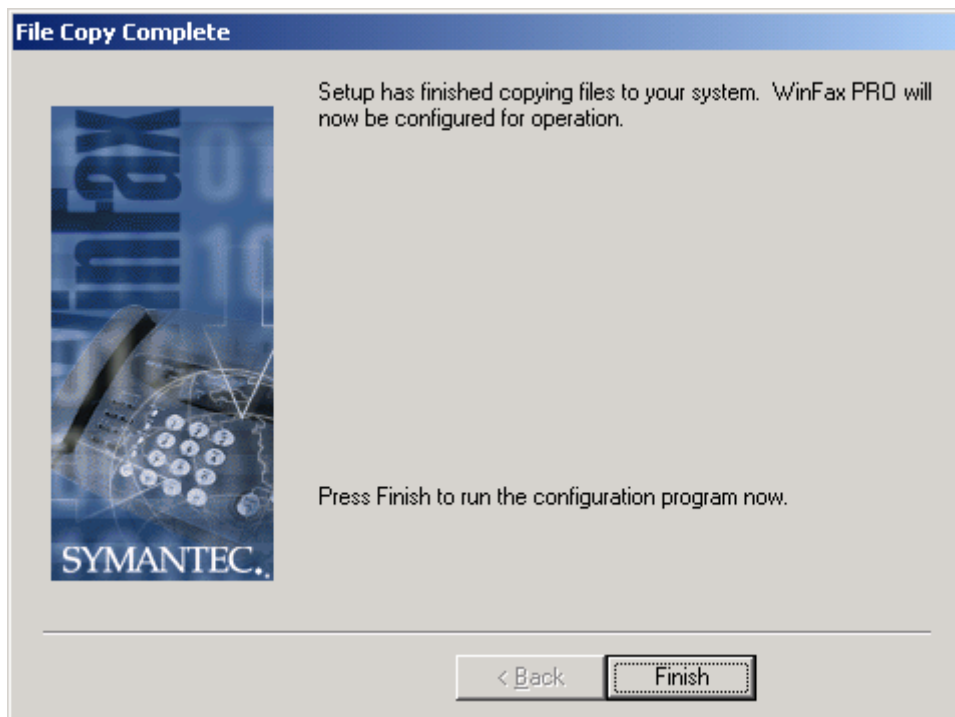


Fig.10

Cliccare su **Finish**

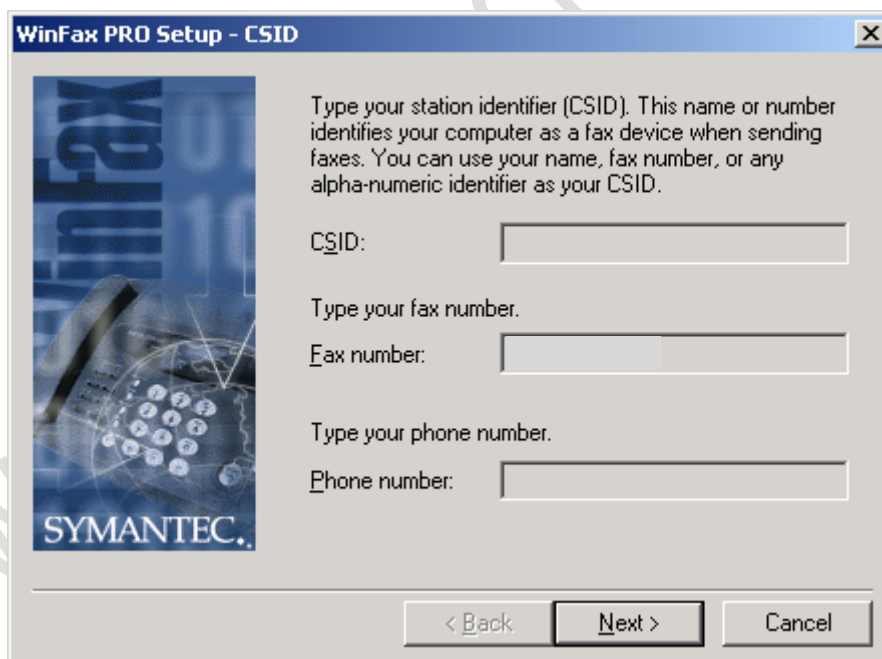


Fig.11

Inserire nel campo Fax number il numero di FAX: 011-XXXXXXX

Cliccare su **Next**



Fig.12

Selezionare **WinFax PRO Sharing**

Clickare su **Next**

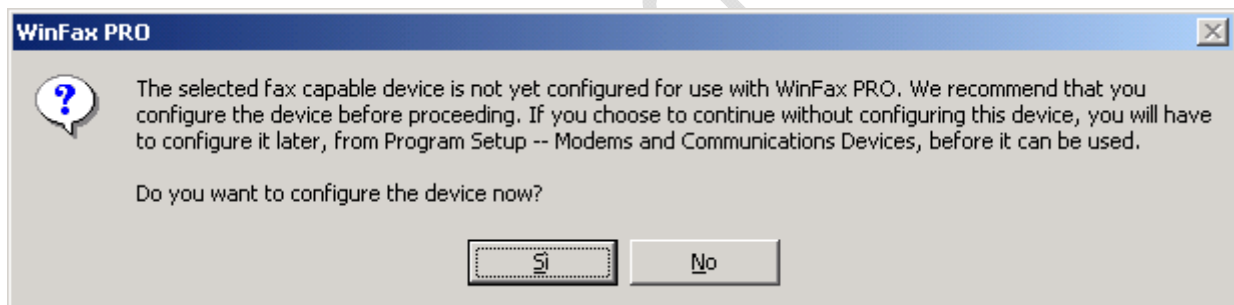


Fig.13

Clickare su **Si**

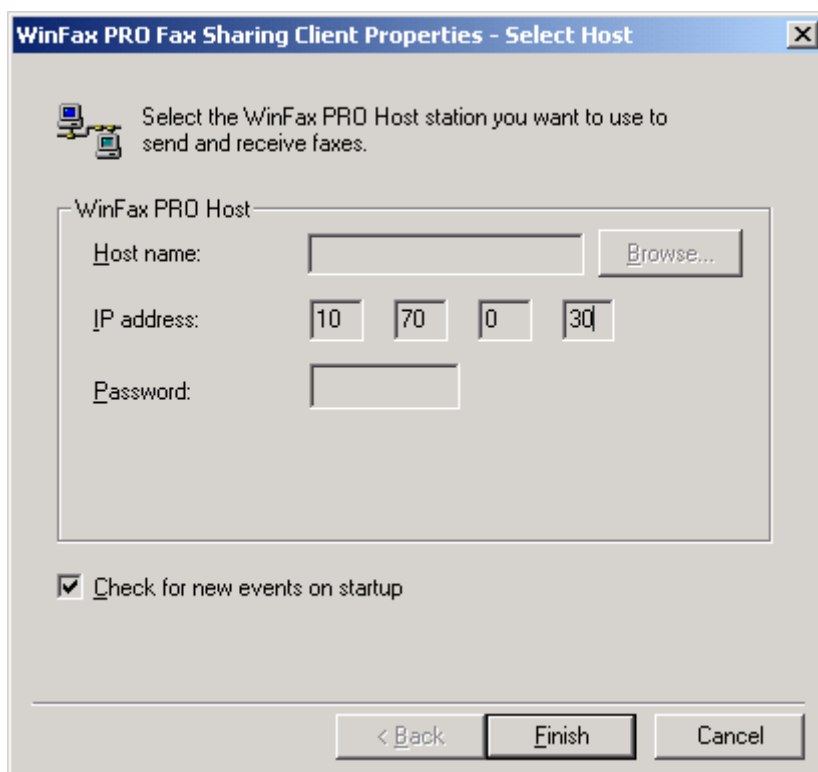


Fig.14

Inserire nel campo IP Address: xx.xx.xxx.xxx

Cliccare su **Finish**

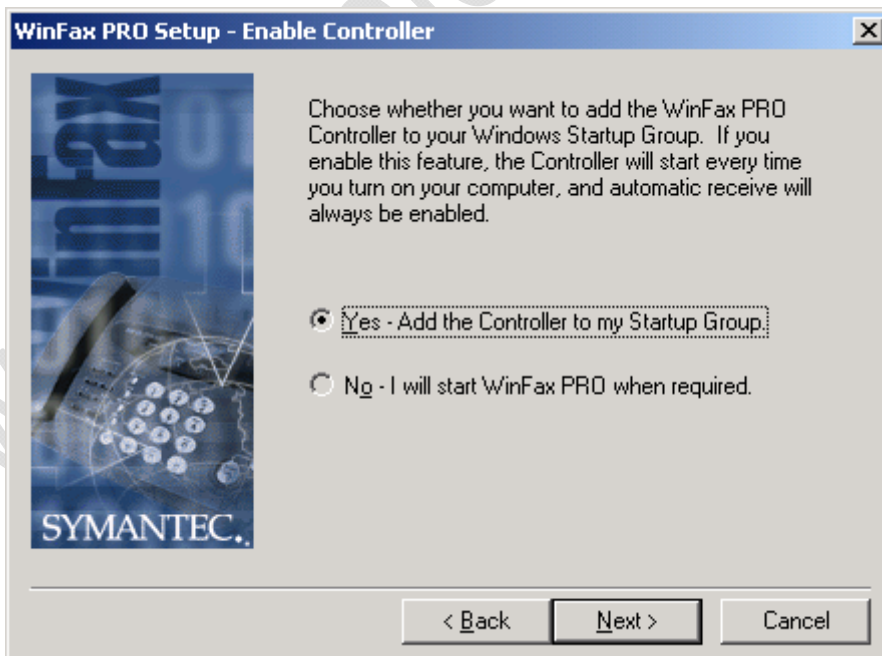


Fig.15

Se si desidera avviare automaticamente Winfax Client all'accensione del pc selezionare **Yes**

Cliccare su **Next**

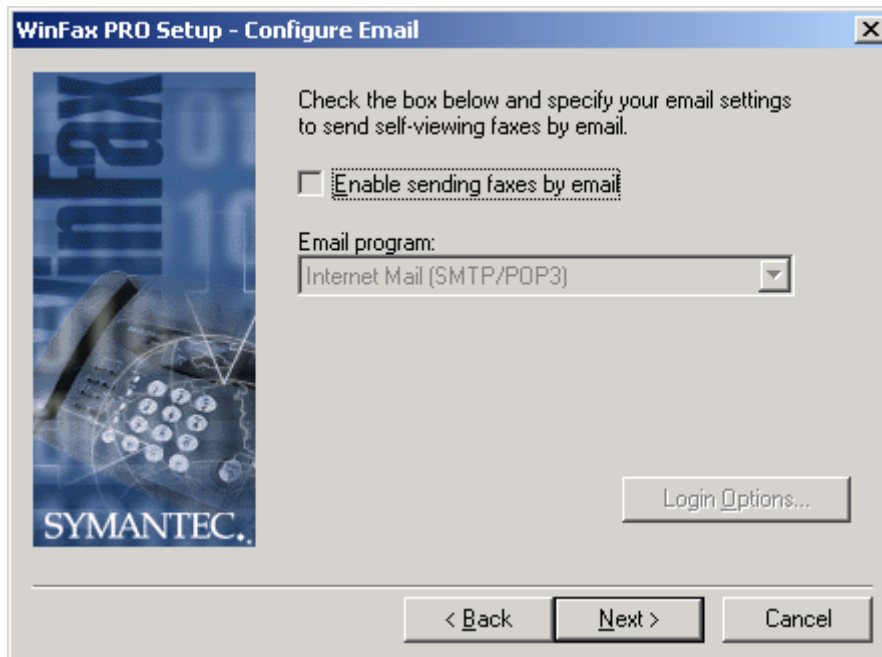


Fig.16

Cliccare su **Next**

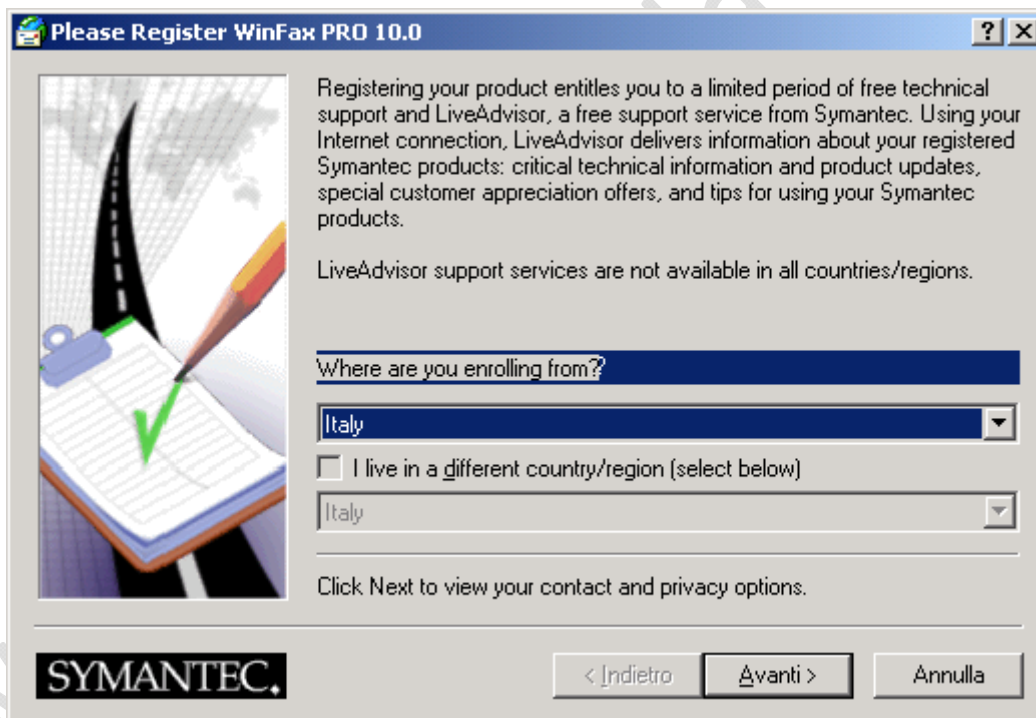


Fig.17

Cliccare su **Annulla**

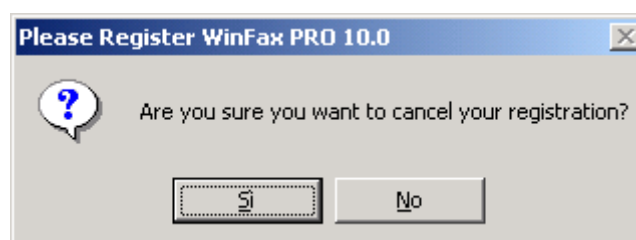


Fig.18

Cliccare su **Si**

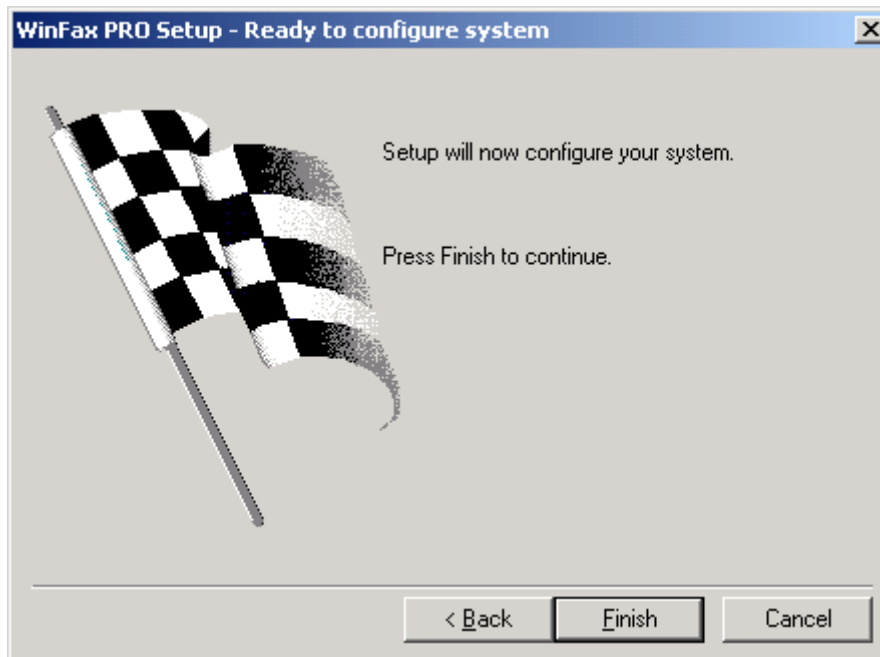


Fig.19

Cliccare su **Finish**

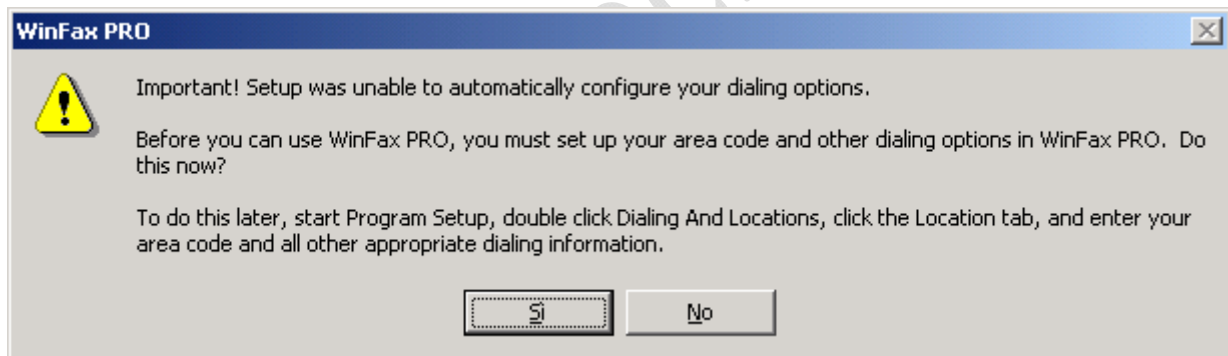


Fig.20

Cliccare su **Si**

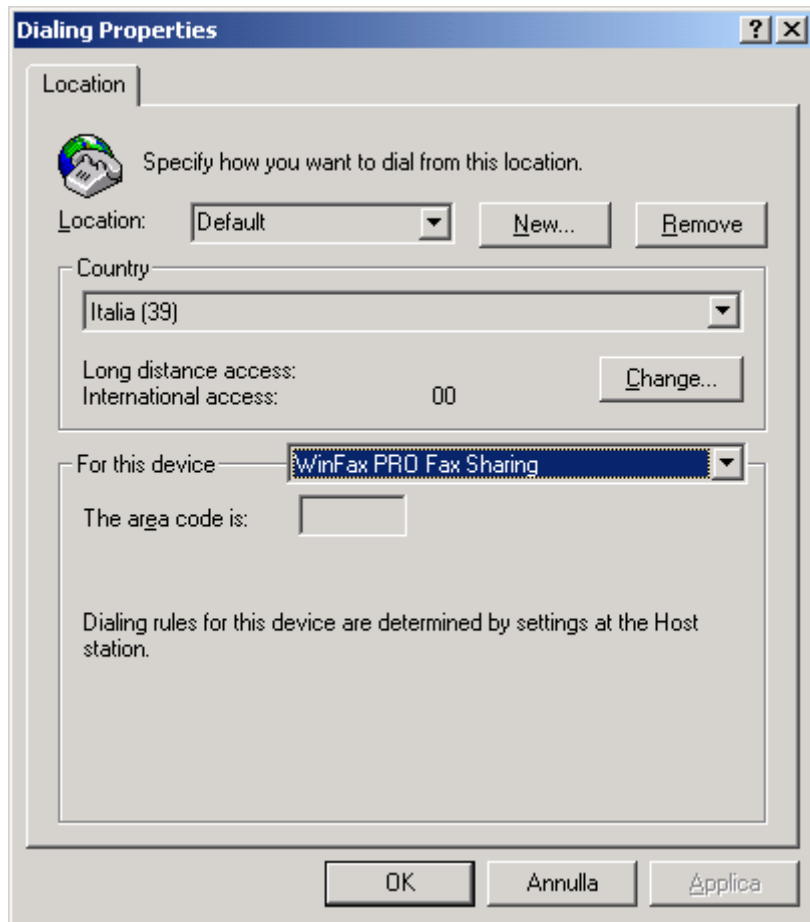


Fig.21

Cliccare su **OK**

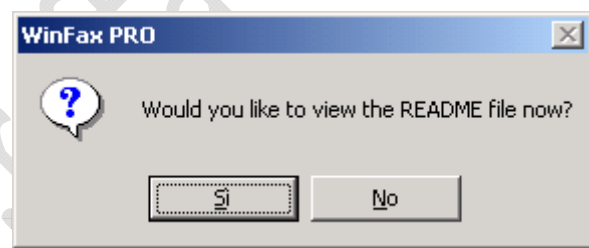


Fig.22

Cliccare su **No**



Fig.23

Cliccare su **Annulla**

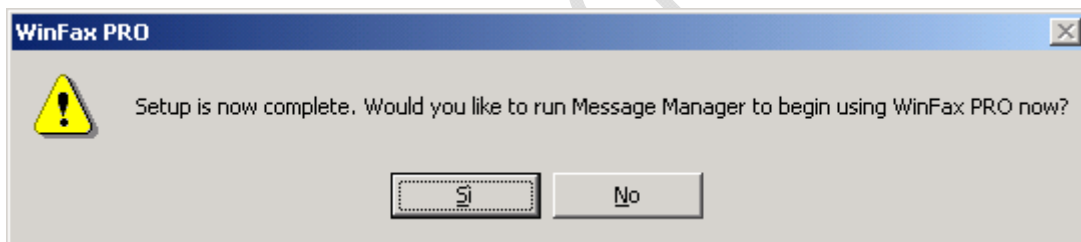


Fig.24

Cliccare su **No**