



INSTALLAZIONE E CONFIGURAZIONE TUN EMUL CLIENT

N.B.: Controllare che sul PC non ci sia l'IBM Personal Communication. Occorre disinstallarlo perché va in contrasto con il Tun Emul Client

P:\TUNPLUS\CLIENT\SETUP.EXE

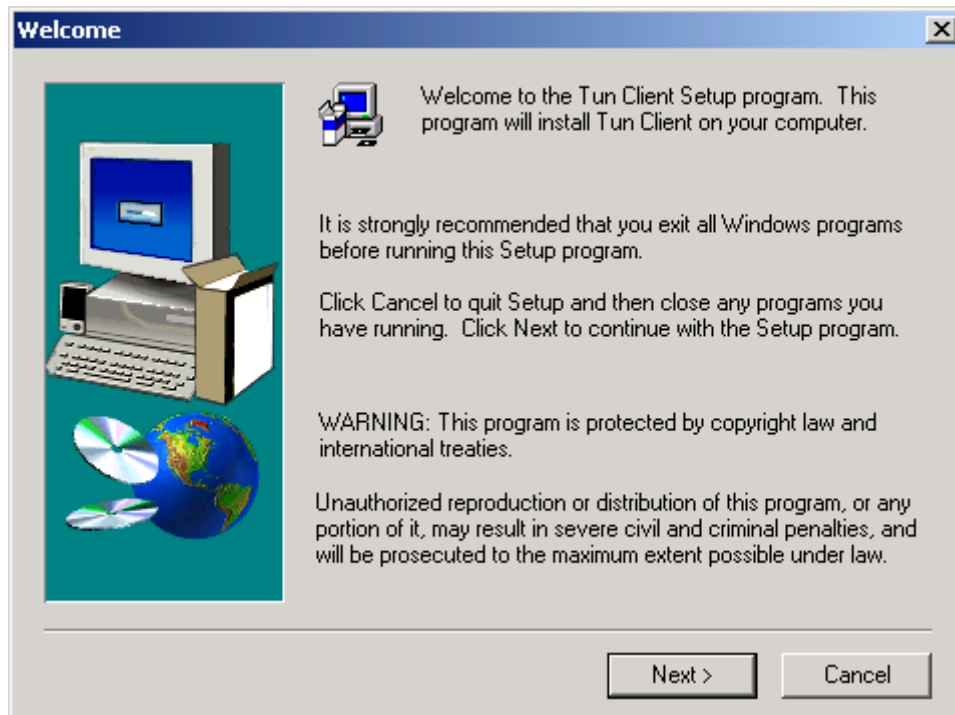


Fig.1

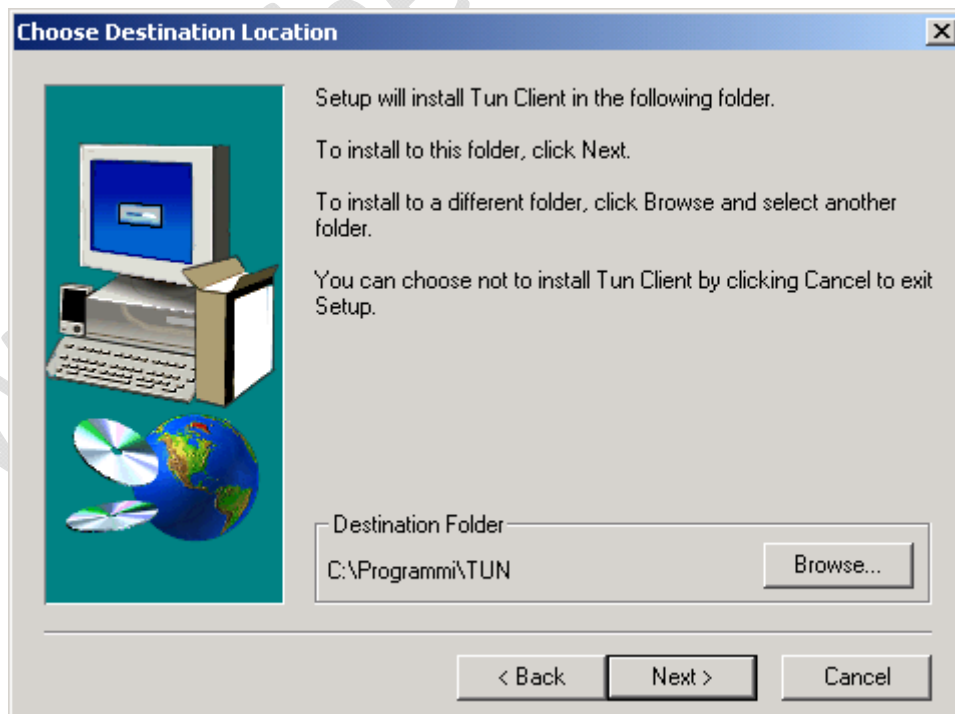


Fig.2

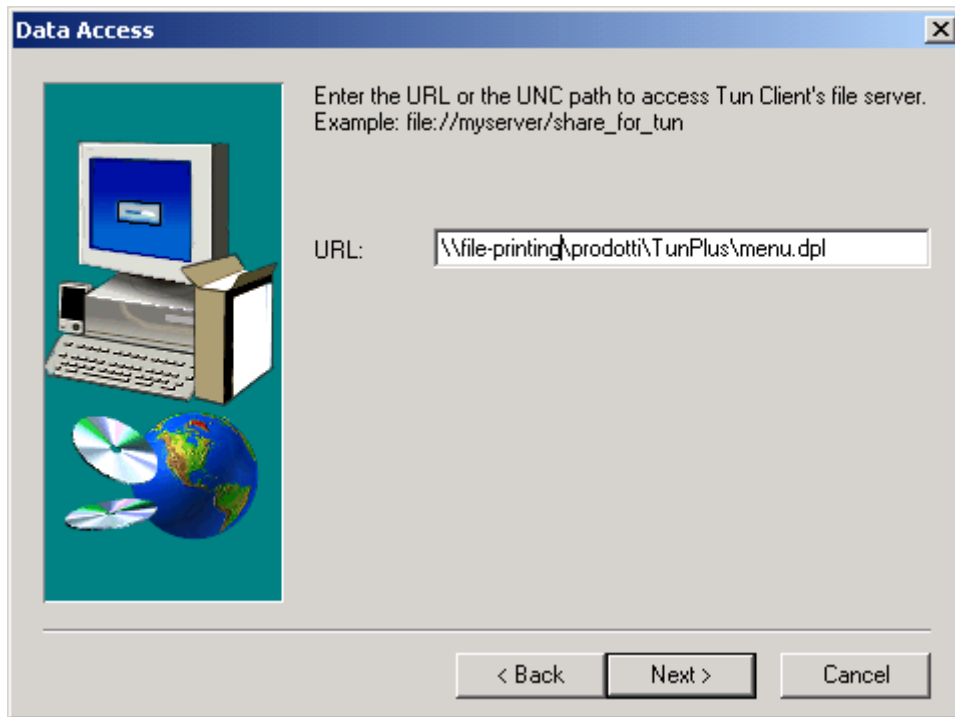


Fig.3

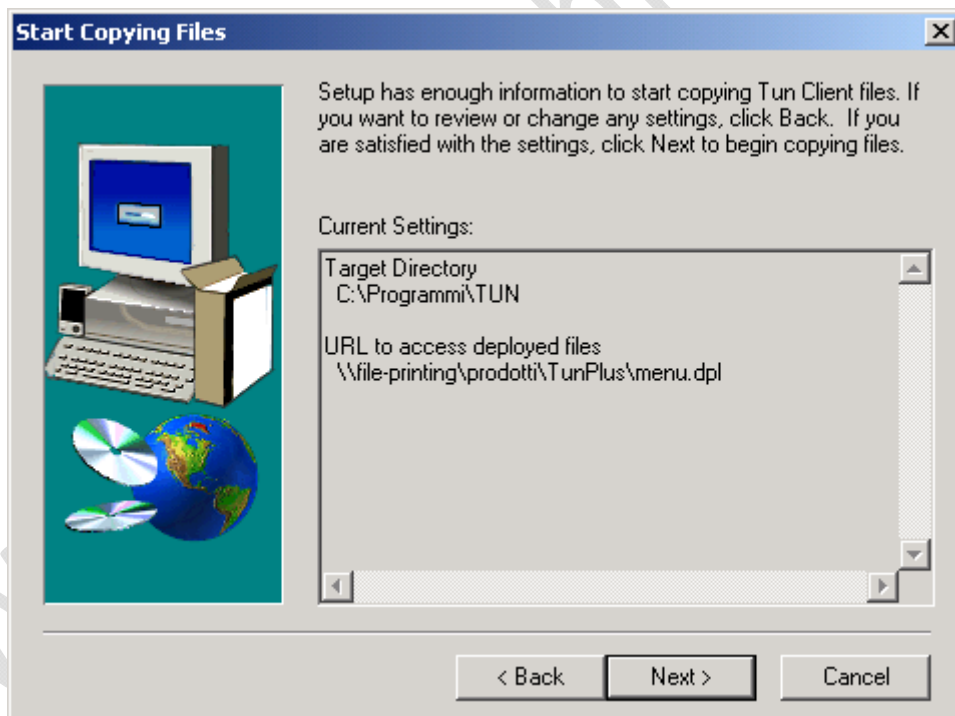


Fig.4

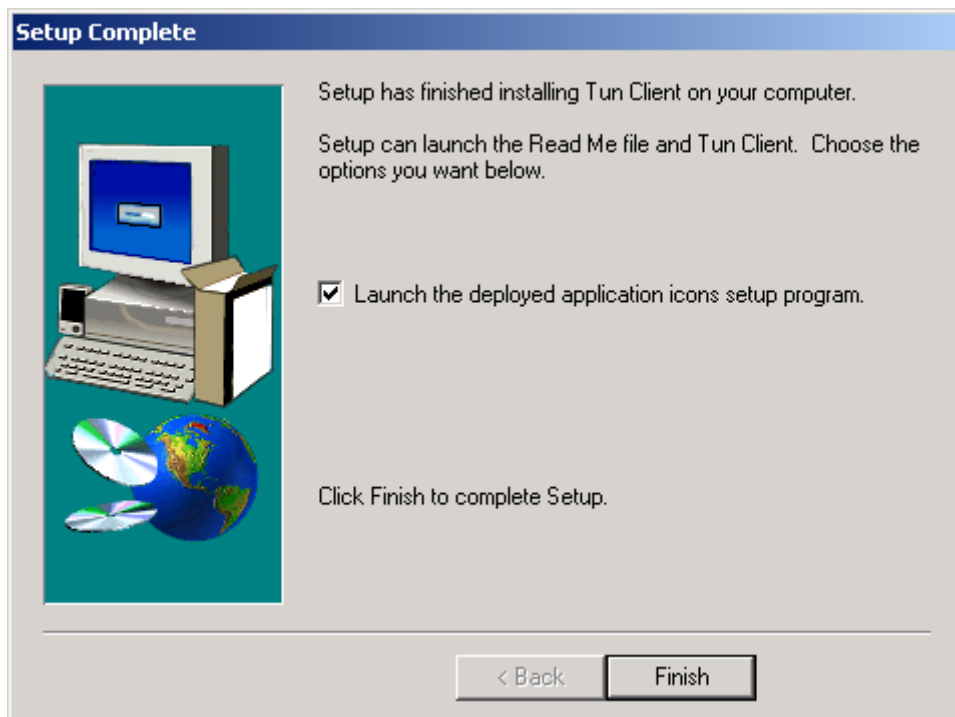


Fig.5

Andare sulle proprietà di IBM Mainframe Access

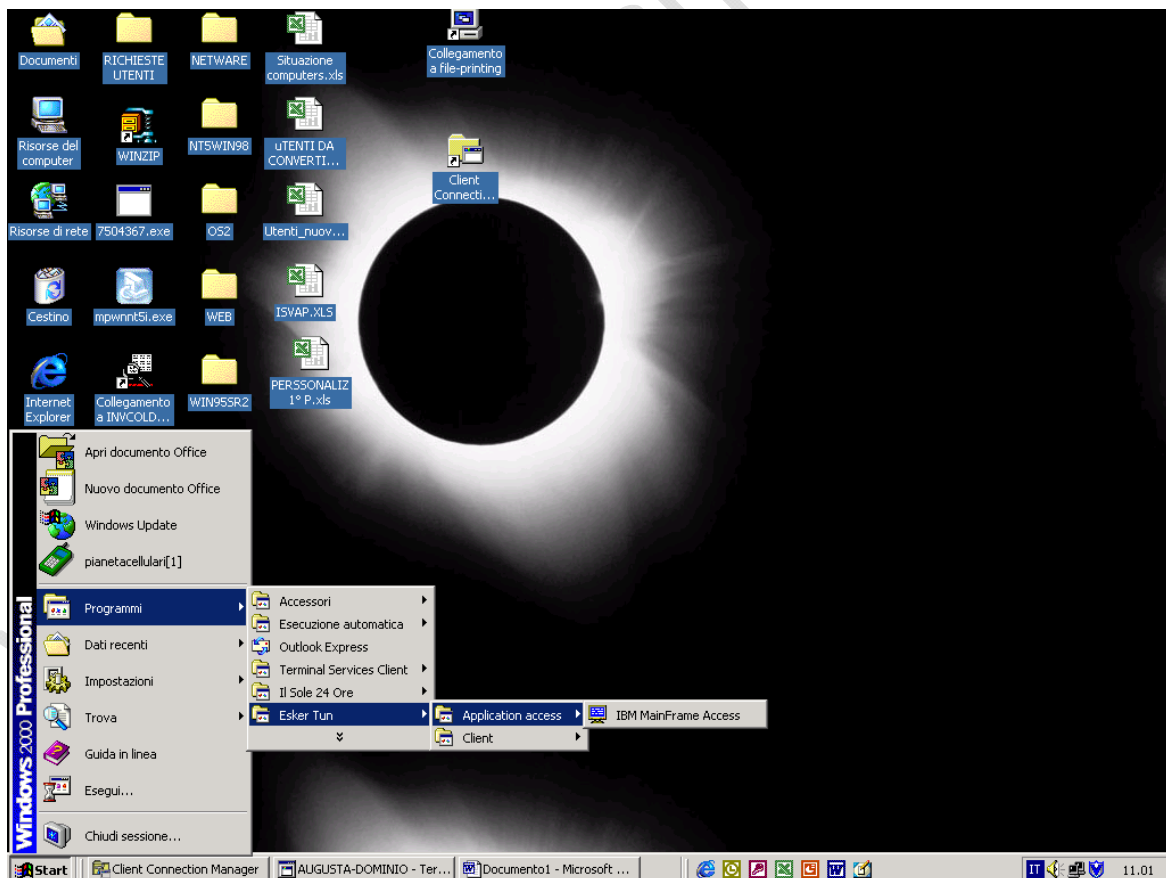


Fig.6

Modificare la « DESTINAZIONE » come segue:

C:\Programmi\TUN\deployer\deploy32.exe /v1.1.0.0 \\\AA-HD1\prodotti\TunPlus\3270.dpl

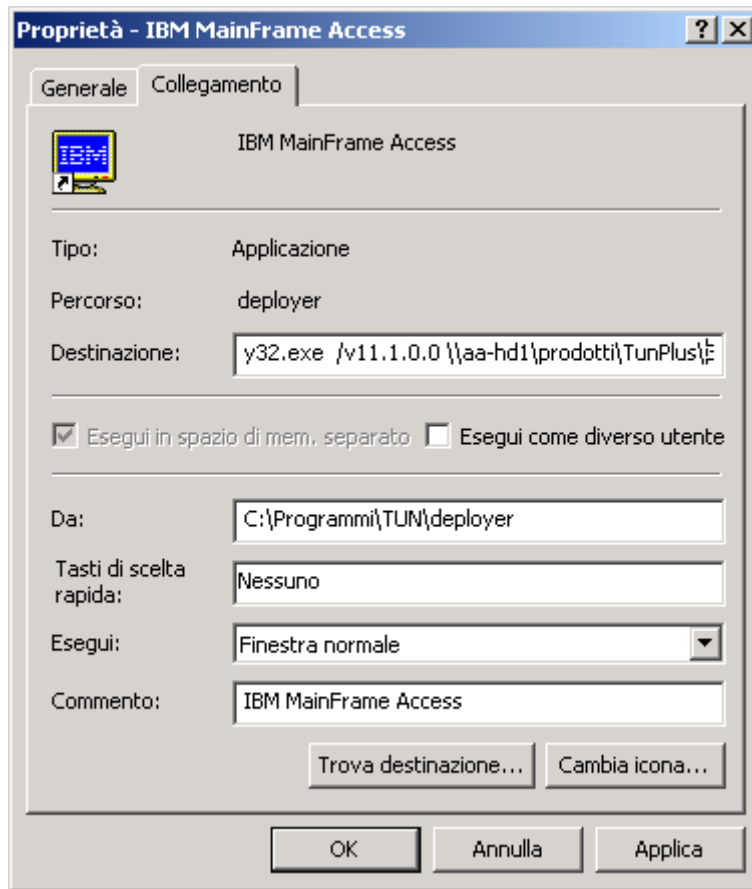


Fig.7

Lanciare IBM Mainframe Access

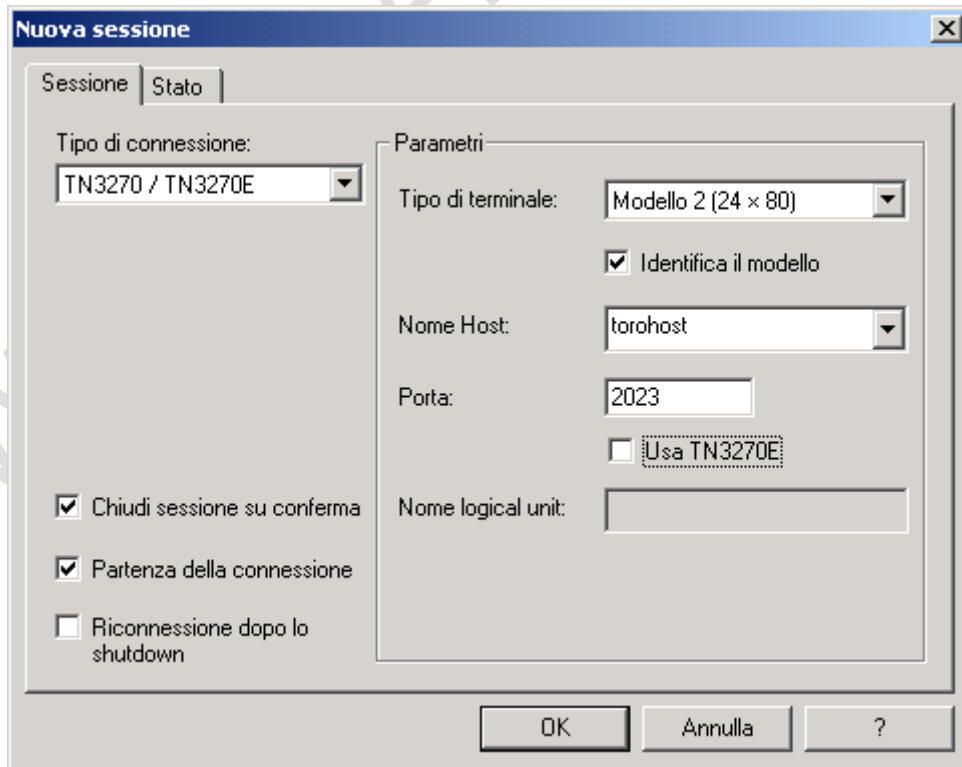


Fig.8

Ok



File

Salva con nome : (su \\file-printing\desktop\$\.....\emul3270\emul3270.cwz)

1. Digitare percorso su "file name", e premere invio (come segue)

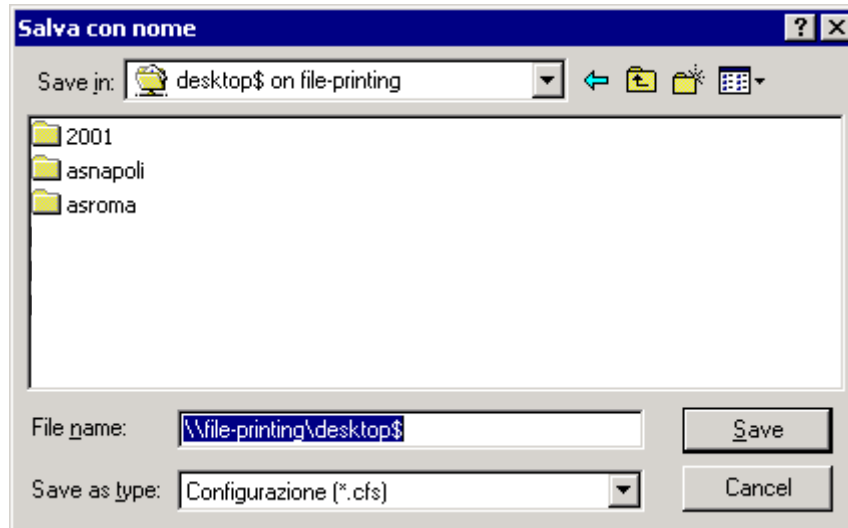


Fig.9

2. Raggiungere la cartella dell'utente desiderato e creare una nuova cartella **Emul3270**, come nell'esempio:

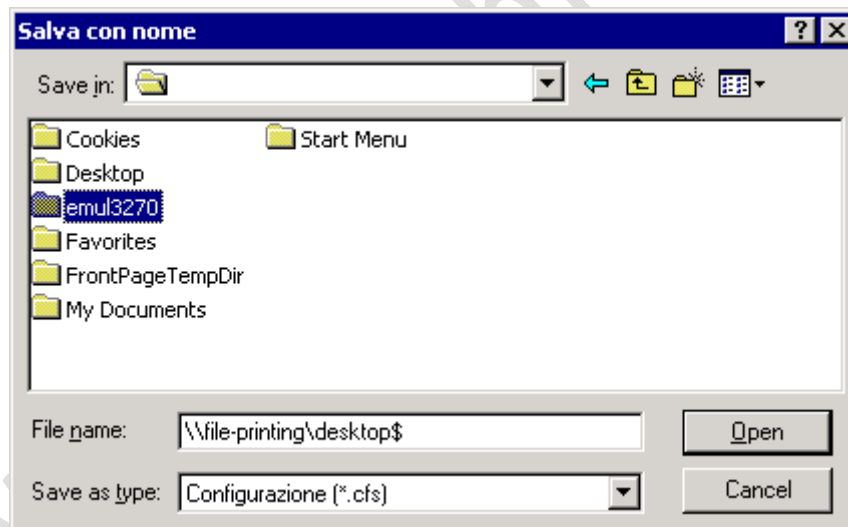


Fig.10

3. All'interno della cartella emul3270, salvare il file emul3270.cwz, come segue:

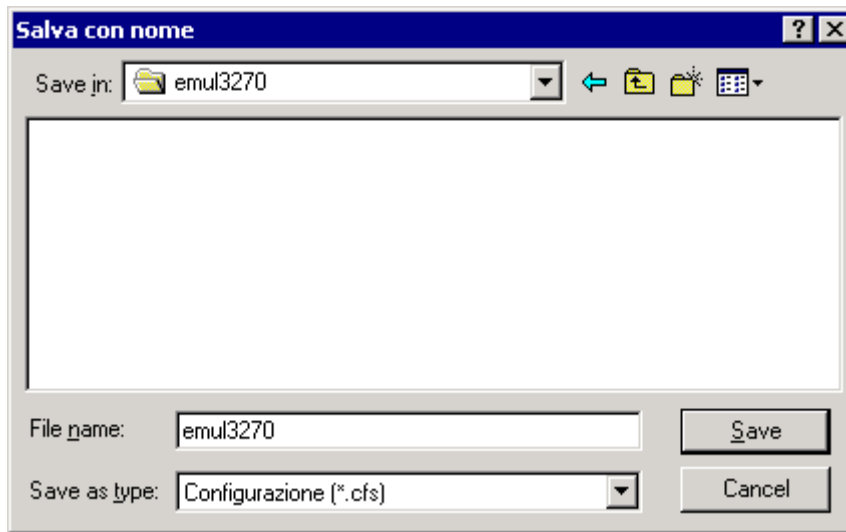


Fig.11

File
Crea un collegamento

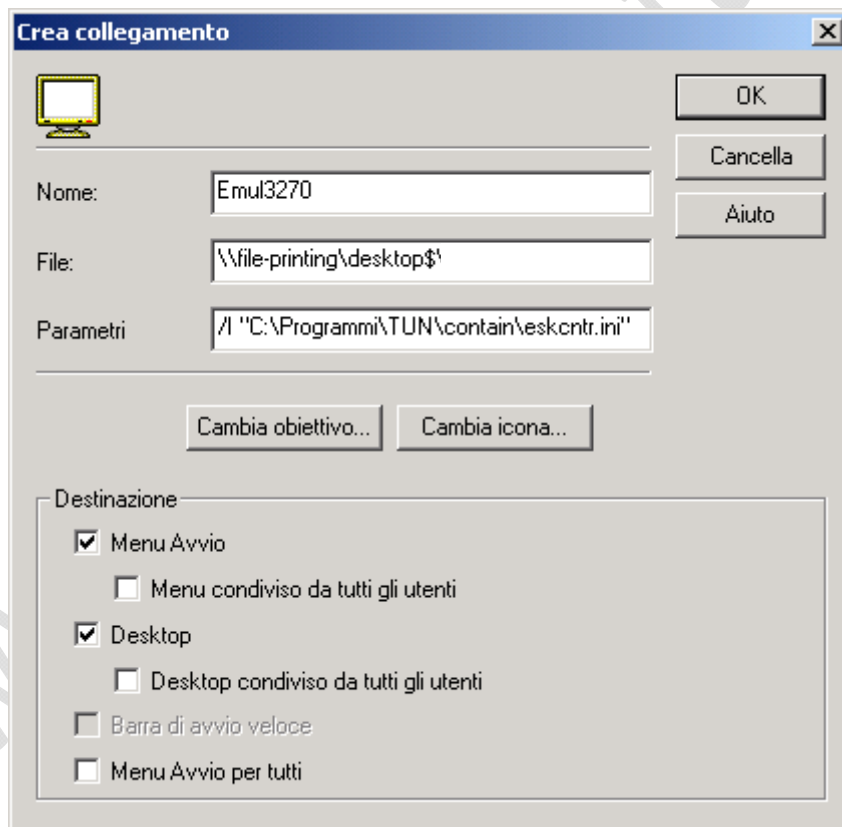


Fig.12

Cambia Icona
Browse...
Scegliere 3270.ico
OK
OK

File/Esci

Personalizzare come da procedura.

PROCEDURA CONFIGURAZIONE TUN EMUL

4. Da " Sessione" selezionare " Carattere", impostare come segue:

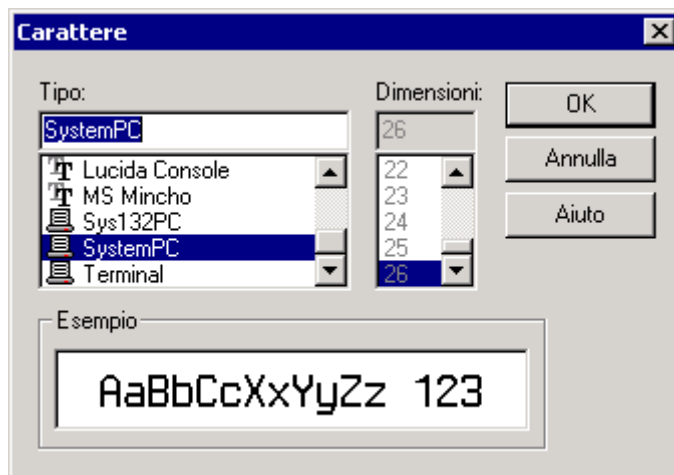


Fig.13

5. Da " Sessione" selezionare "Terminale", impostare come segue:

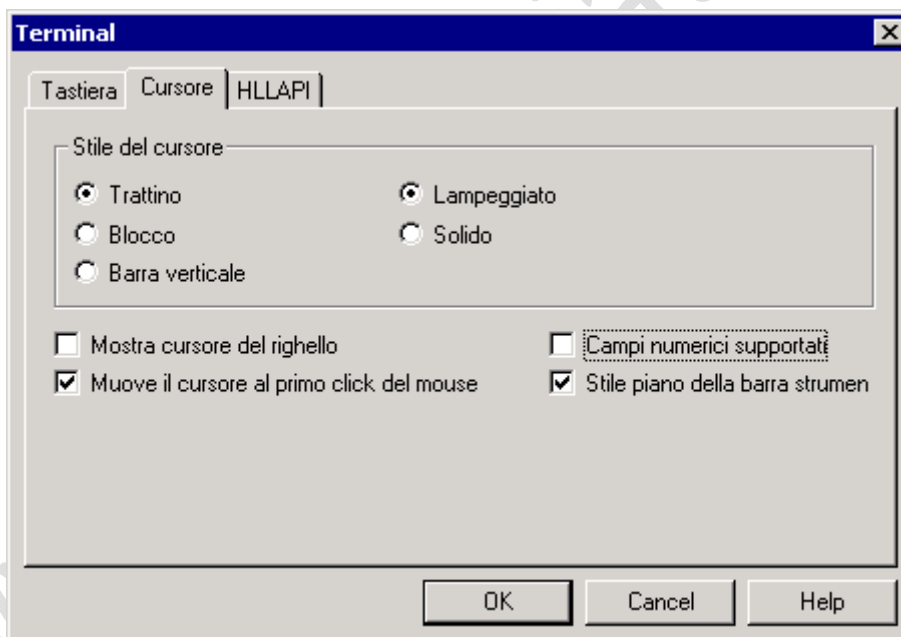


Fig.14

6. Togliere il **PANNELLO DEI TASTI**
7. Salvare le precedenti impostazioni prima di disconnettersi